

## WHY SOFTCONTROL™

In today's world, there are many business units, developing software or integrated software and hardware applications that constantly require changes, like banks, security offices, IT applications, or SW products that have a core basis and release several versions a year.

The development and production method varies from product to product and from company to company, depending on several factors that influence the development method.

Some of the factors include:

- **The type of product:** (Military, IT, SW application, embedded etc.)
- **The maturity of the product:** New product, maintenance version
- **The types of customers:** Several customers with customizations, one customer with a product, several versions for several customers, a small feature for one customer, a product line etc.
- **The users of the organization:** Global teams, distributed development, stand alone or connected to company network, unable to share the same data and procedures.

These four main factors influence the life cycle to be used, and the organization developing, might change the life cycle during the development due to modifications to one or more of the factors mentioned.

These factors make very difficult to organizations to decide upon which method to start working.

Consultants are usually hired to decide upon the "right method".

Organizations start with a long analysis period to define the "proper" life cycle, and invest a considerable amount of time and money in order to define the life cycle, train the people to start working as defined.

After the "right method" is written, it usually becomes obsolete since the initial factors might have changed.

**Modifying the organizational life cycle** is one of the most difficult and expensive processes in any organization. Training people, assimilating new working methods that might not always work, and the benefit is not always measured since usually the current organization life cycle was not measured anyway, so no comparison can be done, therefore you never know the cost-benefit of the new life cycle defined

**SoftControl™** is the only WEB solution designed to solve these problems where definition of **Processes** and **Products** is a dynamic process, enabling modification, tracking, control, assimilation and measurements as part of the working method, without needing to train again all the divisions, groups and participants.

**Product Management and Project Management** are integrated managing the components, their status according to project statuses, and enabling modifications according to marketing changes.

With **SoftControl™**, the products and life cycle can be dynamically controlled and measured from day one.

Tracking, visibility of Products and Projects, interaction between project and product members is easy, and the status and visibility of the project and product are built in **SoftControl™**.

### Internationalized

Fully internationalized with support for English, Hebrew, French, German, Spanish and Italian.



## LIFE CYCLE DEFINITION

**SoftControl™** you can:

Start using **SoftControl™** to implement your current life cycle. No need to modify it. No superseded versions. Just do it with a tool. **SoftControl™** comes with several life cycles, which are adapted to the organization.

Since the life cycle is now in a database, it is actually:

- Controlled
- Can be measured
- Easy to modify
- Up to date all times

After you start managing the Software process using **SoftControl™** measures are collected with the relevant information of the life cycle performance. Each stage defined is measured, so that the organization knows exactly where the bottle necks and problems are, BEFORE modifying the life cycle of the organization

**SoftControl™** supplies smart reports and graphs with the information gathered, pointing to the bottle necks of the process and addressing possible problem areas.

When the organization is ready to modify the life cycle, **SoftControl™** supplies a simple and easy to use User Interface to modify the life cycle. No need to know any language. Simple guided screens to modify the life cycle, and start applying it.

Since users were already used to **SoftControl™**, the change in the life cycle is automatic. The organization does not need to invest in expensive training. **SoftControl™** already leads the users in the new defined life cycle.

**SoftControl™** interfaces and integrates to tools supporting like: Requirements Management, Configuration Management, Change Management, Testing, Project Management and Project Control.

The organization will modify the correct phases, and the automatic measures will help defining the new life cycle.



## PROCESS MODELER



## PROJECT MANAGEMENT

### Project Instantiation

After the processes were defined, Projects are instantiated using the life cycles defined by the Process modeler. Multiple projects can be enacted on each life cycle model. All practitioner roles, activities, work products, dependencies and schedules in each project are managed in accordance to the underlying process model. Deviations from the process (if allowed) are tracked and reported.

### Project Management Assistance

The instantiation of the life cycle is implemented by the specific project, who uses the most suitable life cycle for the project. **SoftControl™** automatically builds the project activities, distribution lists, roles and templates as defined for the life cycle.

### Activity Management

Management of all process activities assigned to the role assumed by the practitioner. Managed activity states include: Started, In Progress, and Completed.

### Change Management

Modifications during the project are managed, and changes are monitored against activities.

### Documents Maintenance

The documents of the project are maintained under **SoftControl™** and are tracked for reviews, approval, releases and versions.

### Project Execution

In order to ensure the execution of the activities of the project, **SoftControl™** handles the tasks required by each participant. Tasks are sent to the project members to monitor the execution of the activities required to perform the project.

### Action items tracking

Action items assigned to project members are tracked on **SoftControl™**, and items due date are reported.

### Tasks Management

Tasks Management for activities, documents or for project members requirements are managed. Statuses can be In work, completed or rejected.

### Automated Notifications

Automatic generation of email notifications and tasks based on various process triggers to inform practitioners of the progress of the process. All notification messages are configurable, and can be traced back from the system.

### History

History of changes is managed, enabling smart reports with historical data, reasons for changes, and comparisons with other projects.

### Schedule and Work Breakdown Structure

Automatic generation of work breakdown structure and schedule for the project instances of the process.

### Process Deviation

Deviation from the prescribed process can be allowed at the project level. All process deviations, such as bypassing an activity, are tracked and reported by the system.

### Multi-Project Development

Projects that involve the development of multiple application "components" where the development of each component needs to follow the same portion of a larger process. The project manager can split a segment of the process into multiple projects and assign each project to another stream. The same process is enforced across all components, even though each component can have its own schedule and resource assignments.

### Skills Management

The system checks the skills of each project member against the activities defined, promising that the activity is performed by the qualified role.

## Resource Reporting

Tracking and reporting of resource consumption and cost by project, process, or process activity against planned resourcing levels. Resource management portal for approving resource assignments and to report resource consumption for each project.

## Budget Management and Control

Budget is managed and controlled. The parameters influencing the budget can be defined, and deviations from parameters, time and budget are alerted to assist correcting deviations from a pre-defined percentage. SoftControl supports the Earned Value Management System (EVMS) model.

## Time, Budget and parameters reporting

The project members report the time worked per activity, enabling the collection of such data to measure project's performance. Parameters influencing the budget and time are reported too, thus deviations from original plan regarding bugs, requirements, enhancements, modules, lines coded, number of reviews are reported as well.

## Security

Security definition up to 10 levels of security, ensuring access to authorized project members to the data according to security definitions.

## Lessons Learned and Best Practices

Facility for capturing lessons learned at project level and best practices at process level. Comparisons between the same processes and between projects are performed, enabling improvements to the processes required.

## Real Time Metrics and Reports

Consolidated reporting of quantitative process metrics that measure process conformance and allowed process deviation. Process metrics are provided in a rolled-up view across the whole process. Detailed view of process metrics at the level of a work breakdown unit or activity can be obtained through a drill-down function.

## Diagrams and reports

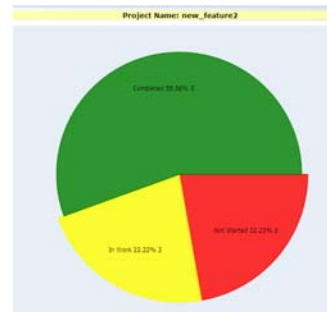
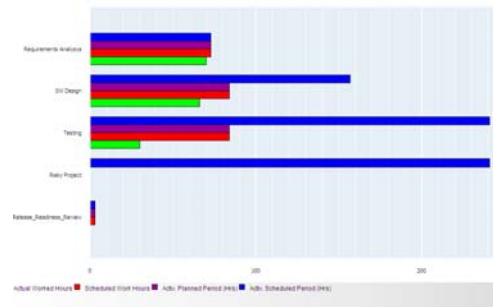
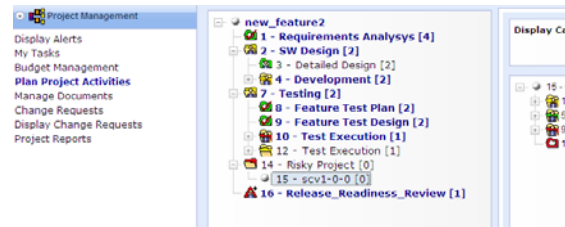
SoftControl™ has several graphics, diagrams and reports to all types of users: Project Manager, Managers, time and cost controllers and other users.

## Portal per Role

Each project member is provided with just-in-time and just-enough process information depending on their needs. Project and role based access to the full process information by each role.



# PROJECT MANAGER



## PRODUCT MANAGEMENT

The deliverables of a project are products, components, software releases, documentation and other types of deliverables.

**SoftControl™** manages the products and components, their variants and their statuses integrated within the process.

### Product Creation

Products are created with their attributes and relationships. The types of components can be defined and versions maintained, their price, quantity, status, process required to create each component.

### Variants and versions

Products variants and versions are maintained, enabling re-use of products and components.

### Product Process

The process required to create a product, or to maintain a variant is integrated with process management, thus enabling repeatability and re-use of the most up to date processes required to create a product.

### Product Manager

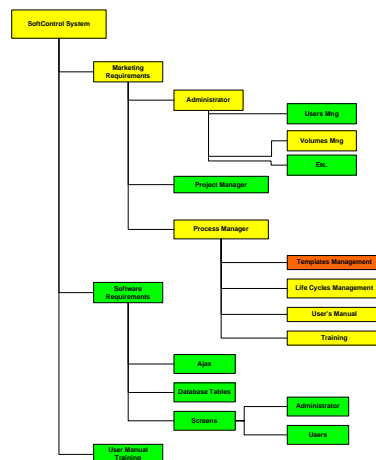
Products have owners, responsible and accountable to for architecture of the products.

### Reuse of Components

**SoftControl™** supports reuse of components, by sharing them between products. Thus modifications to a component are automatically integrated in the product.

### Product and Project Integration

The integration between products and projects is critical for success of the organization. With **SoftControl™** the integration is easy, visible and maintainable.



## SOFTCONTROL™ ARCHITECTURE

- Web 2.0 – Ajax
- No client installation required
- Distributed - Multi-Site
- Multi Language
- Secured interface
- Portal per role
- Open source
- Notifications and interface to E-Mail
- Open interfaces to other systems

